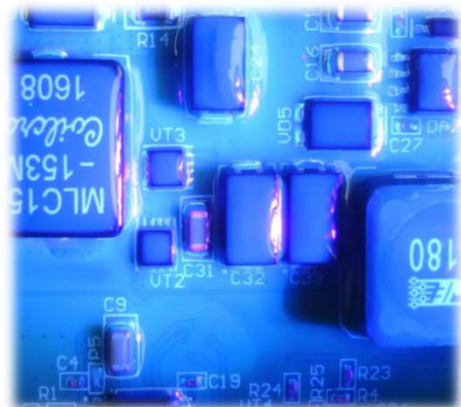
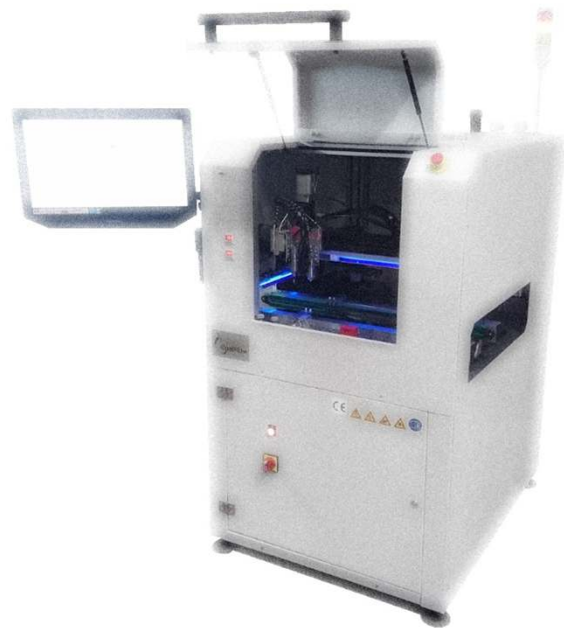
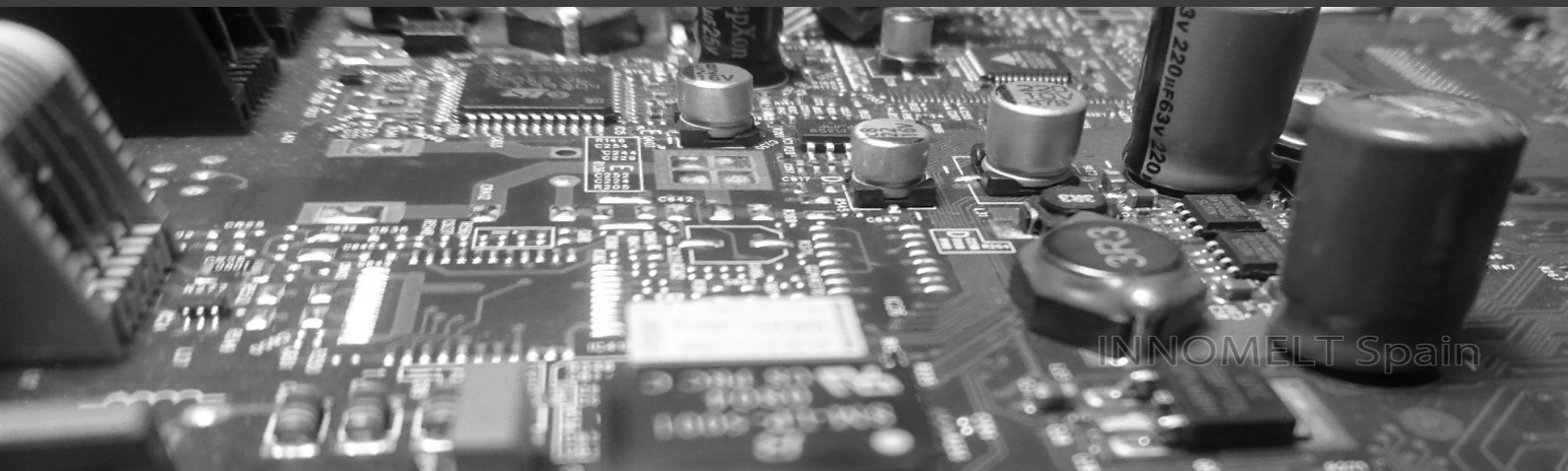


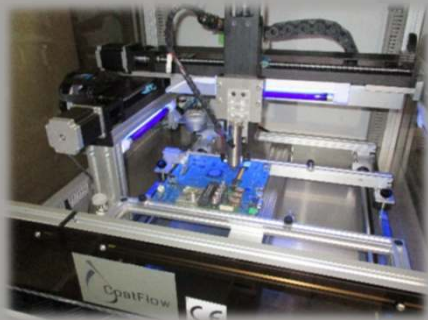
# SELECTIVE CONFORMAL COATING AND CURING SOLUTIONS



# SELECTIVE CONFORMAL COATING AND DISPENSING SOLUTIONS

## CF440 LC 'FIRST ENTRY LEVEL' BENCHTOP ROBOT

### RELIABLE, ACCURATE AND EASY-MAINTENANCE SOLUTIONS FOR COATING AND DISPENSING



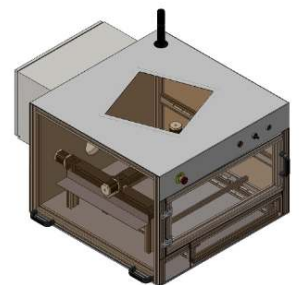
GANTRY SYSTEM INSIDE

- ACCURATE 4-AXIS (X, Y, Z, TILT) ROBOTS TO PROVIDE THE HIGHEST QUALITY SUPPORT FOR DISPENSING AND COATING PURPOSES.
- REAL ELIMINATION OF MASKING OPERATIONS, SAVING TIME, MONEY AND GETTING HIGH EFFICIENCY AND REPEATABILITY LEVELS ON PCB'S PROTECTION PURPOSES
- HIGH SPEED AND ACCURACY ON CONFORMAL COATING AND DISPENSING PROCESS.
- EASY PROGRAMMING SYSTEM WITH SPECIALIZED SOFT IS DESIGNED FOR PROGRAMMING LINES, DOTS, ARCS, CIRCLES, POLYLINES, AREAS, ETC.
- EASY MULTI-BOARD PROGRAMMING SYSTEM.
- OPTIONAL TEACHING CAMERA FOR PROGRAMMING PURPOSES, **COATvisionTEACH®**
- OPTIONAL. **PATHCOAT®** WINDOWS EXCLUSIVE SOFTWARE FOR GETTING THE BEST PRODUCTION RATIOS. AUTOMATIC OPTIMIZATION SYSTEM AND CAD IMPORT PROVIDE A HELPFUL TOOL FOR IMPROVING PATTERNS FROM A PIC.
- ALL PARTS ARE MADE OF STAINLESS STEEL AND ALUMINUM FOR EASY CLEANING AND EFFICIENT PROTECTION AGAINST SOLVENTS AND ANY AGGRESSIVE LIQUID.
- EASY CONTROL OF ALL COATING AND DISPENSING PARAMETERS.
- BLACK LIGHT FOR INSPECTION PURPOSES AND WHITE LED LIGHT FOR PROGRAMMING.
- FLEXIBLE, ROBUST AND ACCURATE GANTRY SYSTEMS INTEGRATED WITH BALL SCREW MOTION SYSTEM AND MICRO STEPPERS MOTORS PROVIDE LONG-TERM RELIABILITY.
- A FULL RANGE OF VALVES IS AVAILABLE TO COVER ALL DISPENSING AND COATING DEMANDS. COATINGS, GASKETS, FILLINGS, AND OTHER KIND OF PROCESSES ARE ALSO POSSIBLE.
- FULL RANGE OF PRESSURE TANKS, CARTRIDGES, SYRINGES TO FEED THE VALVES.

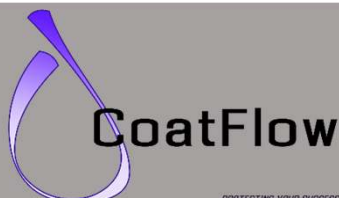
APPS VIDEO CF440 LC <https://youtu.be/n58hl2qzU0c>



[FULL CATALOG DOWNLOAD](#)



MATERIALS: CONFORMAL COATINGS, ACRYLICS, URETHANES, SILICONES, RTV, BI-COMPONENT MATERIALS, ETC.



PROTECTING YOUR SUCCESS



[www.coatflow.com](http://www.coatflow.com)

# SELECTIVE CONFORMAL COATING AND DISPENSING SOLUTIONS

## CF440 BENCHTOP ROBOT 'BIG WORKING AREA'

### RELIABLE, ACCURATE AND EASY-MAINTENANCE SOLUTIONS FOR COATING AND DISPENSING

- ACCURATE 4-AXIS (X, Y, Z, TILT) ROBOTS TO PROVIDE THE HIGHEST QUALITY SUPPORT FOR DISPENSING AND COATING PURPOSES.
- REAL ELIMINATION OF MASKING OPERATIONS, SAVING TIME, MONEY AND GETTING HIGH EFFICIENCY AND REPEATABILITY LEVELS ON PCB'S PROTECTION PURPOSES.
- HIGH SPEED AND ACCURACY ON CONFORMAL COATING AND DISPENSING PROCESSES.
- AN EASY PROGRAMMING SYSTEM WITH SPECIALIZED SOFT IS DESIGNED FOR PROGRAMMING LINES, DOTS, ARCS, CIRCLES, POLYLINES, AREAS, ETC.
- EASY MULTI-BOARD PROGRAMMING SYSTEM.
- LAPTOP ( WINDOWS 10)TO ACCESS ALL FUNCTIONS AND INFORMATION OF THE PROCESS.
- PROGRAMMING BY HIGH RESOLUTION CAMERA.
- CONTROL SOFTWARE **COATcontrolPRO 2** THAT ALLOWS US TO MANAGE ALL THE PARAMETERS NECESSARY FOR DISPENSING AND COATING PROCESSES ON SCREEN. ELEMENTS AS LEVEL SENSORS, STATE OF DOORS, CONTROL OF CONVEYOR, ETC. THEY ARE ALWAYS IN PRESENT IN OUR DAY TO DAY.
- **PATHCOAT** WINDOWS EXCLUSIVE SOFTWARE FOR GETTING THE BEST PRODUCTION RATIOS. AUTOMATIC OPTIMIZATION SYSTEM AND CAD IMPORT PROVIDE A HELPFUL TOOL FOR IMPROVING PATTERNS FROM A PIC.
- OPTIONAL FLOW METER MODULE. GET ON REAL TIME AMOUNT OF DISPENSED MATERIAL.
- OPTIONAL TRACEABILITY MODULE INCLUDING RECOGNITION OF 1D AND 2D BAR CODES (QR, DATAMATRIX, ETC.) FOR COMPLETE TRACEABILITY.
- OPTIONAL FIDUTIAL MARKS RECOGNITION RECALCULATE X AND Y POSITIONS IN DISPENSING OPERATIONS.
- ALL PARTS ARE MADE OF STAINLESS STEEL AND ALUMINUM FOR EASY CLEANING AND EFFICIENT PROTECTION AGAINST SOLVENTS AND ANY AGGRESSIVE LIQUID.
- EASY CONTROL OF ALL COATING AND DISPENSING PARAMETERS.
- BLACK LIGHT FOR INSPECTION PURPOSES AND WHITE LED LIGHT FOR PROGRAMMING.
- FLEXIBLE, ROBUST AND ACCURATE GANTRY SYSTEMS INTEGRATED WITH BALL SCREW MOTION SYSTEM AND SERVO MOTORS PROVIDE LONG-TERM RELIABILITY.
- A FULL RANGE OF VALVES IS AVAILABLE TO COVER ALL DISPENSING AND COATING DEMANDS. COATINGS, GASKETS, FILLINGS, AND OTHER KIND OF PROCESSES ARE ALSO POSSIBLE.



PCB'S IN PANEL.

VIDEO APPS CF440 <https://youtu.be/8jA1M6luNLo>



[FULL CATALOG DOWNLOAD](#)

MATERIALS: CONFORMAL COATINGS, ACRYLICS, URETHANES, SILICONES, RTV, BI-COMPONENT MATERIALS, ETC.



[www.coatflow.com](http://www.coatflow.com)

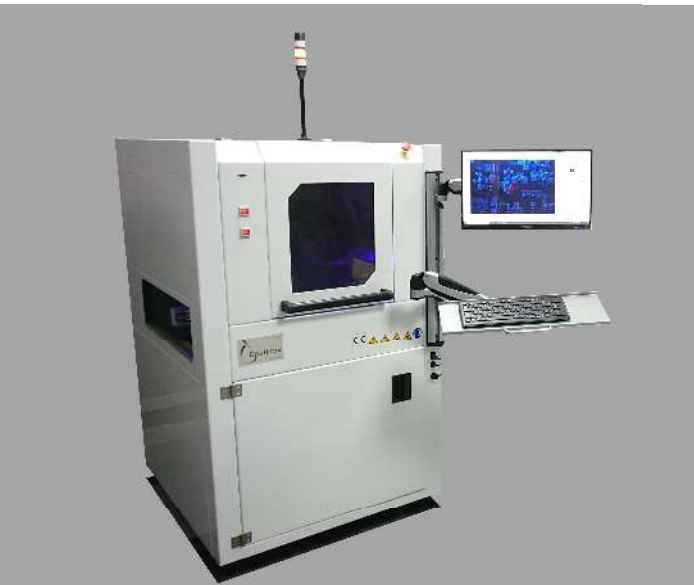


# SELECTIVE CONFORMAL COATING AND DISPENSING SOLUTIONS

## CF395 IL IN-LINE COATER AND DISPENSER

### RELIABLE, ACCURATE AND EASY-MAINTENANCE SOLUTIONS FOR COATING AND DISPENSING

- ACCURATE 4 AND 5-AXIS (X, Y, Z, ROTATION AND TILT) ROBOTS TO PROVIDE THE HIGHEST QUALITY SUPPORT FOR DISPENSING AND COATING PURPOSES.
- REAL ELIMINATION OF MASKING OPERATIONS, SAVING TIME, MONEY AND GETTING HIGH EFFICIENCY AND REPEATABILITY LEVELS ON PCB'S PROTECTION PURPOSES.
- HIGH SPEED AND ACCURACY ON CONFORMAL COATING AND DISPENSING.
- AN EASY PROGRAMMING SYSTEM WITH SPECIALIZED SOFT IS DESIGNED FOR PROGRAMMING LINES, DOTS, ARCS, CIRCLES, POLYLINES, AREAS, ETC.
- EASY MULTI-BOARD PROGRAMMING SYSTEM.
- HIGH RESOLUTION CAMERA TEACHING - PROGRAMMING SYSTEM.
- CONTROL SOFTWARE **COATcontrolPRO 2.0** THAT ALLOWS US TO MANAGE ALL THE PARAMETERS NECESSARY FOR DISPENSING AND COATING PROCESSES ON SCREEN. ELEMENTS AS LEVEL SENSORS, STATE OF DOORS, CONTROL OF CONVEYOR, ETC. THEY ARE ALWAYS IN PRESENT IN OUR DAY TO DAY.
- **PATHCOAT®** WINDOWS EXCLUSIVE SOFTWARE FOR GETTING THE BEST PRODUCTION RATIOS. AUTOMATIC OPTIMIZATION SYSTEM AND CAD IMPORT PROVIDE A HELPFUL TOOL FOR IMPROVING PATTERNS FROM A PIC.
- FLOW METER MODULE. GET ON REAL TIME AMOUNT OF DISPENSED MATERIAL.
- OPTIONAL TRACEABILITY MODULE INCLUDING RECOGNITION OF 1D AND 2D BAR CODES (QR, DATAMATRIX, ETC.) FOR COMPLETE TRACEABILITY.
- OPTIONAL FIDUTIAL MARKS RECOGNITION RECALCULATE X AND Y POSITIONS IN DISPENSING OPERATIONS.
- OPTION OF MULTIPLE SENSORS AS "COATING WIDTH MEASUREMENT", OR MEASUREMENT OF "WARPAGE", AVAILABLE UNDER DEMAND
- ALL PARTS ARE MADE OF STAINLESS STEEL AND ALUMINUM FOR EASY CLEANING AND EFFICIENT PROTECTION AGAINST SOLVENTS AND ANY AGGRESSIVE LIQUID.
- EASY CONTROL OF ALL COATING AND DISPENSING PARAMETERS.
- BLACK LIGHT FOR INSPECTION AND WHITE LED LIGHT FOR PROGRAMMING.
- FLEXIBLE, ROBUST AND ACCURATE GANTRY SYSTEMS INTEGRATED WITH A BALL-SCREWED MOTION SYSTEM AND SERVO MOTORS PROVIDE LONG-TERM RELIABILITY.
- A FULL RANGE OF VALVES IS AVAILABLE TO COVER ALL DISPENSING AND COATING DEMANDS. COATINGS, GASKETS, FILLINGS, AND OTHER KIND OF PROCESSES ARE ALSO POSSIBLE.



CONTROL SOFTWARE **COATCONTROL PRO 2**



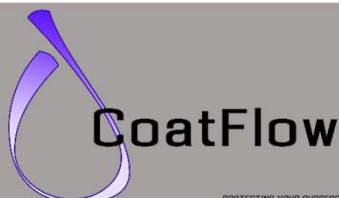
VIDEO APPS CF395 IL <https://youtu.be/Bh6yiQH64eY>



[FULL CATALOG DOWNLOAD](#)



MATERIALS: CONFORMAL COATINGS, ACRYLICS, URETHANES, SILICONES, RTV, BI-COMPONENT MATERIALS, ETC.



PROTECTING YOUR SUCCESS



[www.coatflow.com](http://www.coatflow.com)

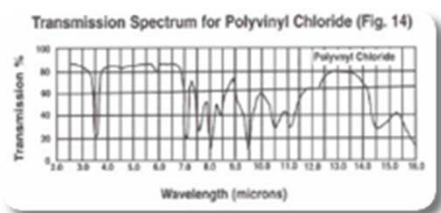
# CURING SOLUTIONS

## IR CURING OVENS CF HIR SERIES

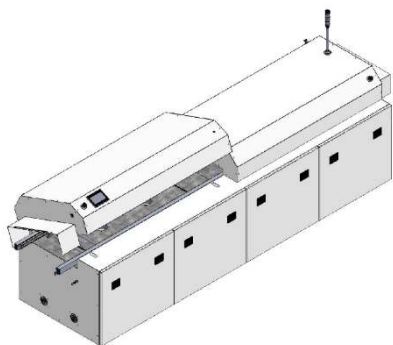
RELIABLE, ACCURATE AND EASY MAINTENANCE SOLUTIONS

### IR CURING STATIONS FOR CONFORMAL COATINGS AND ADHESIVES

- IR CURING OVENS SPECIFICALLY DESIGNED FOR CONFORMAL COATINGS APPLICATIONS (SILICONES, URETHANES, XYLENES, EPOXIES, ETC.).
- OUR OVENS ARE EQUIPPED WITH IR CERAMIC PANELS WHICH GIVES HIGH HEATING SPEED AND POWERFUL HEATING RANGE PER SURFACE UNIT.
- EASY PROGRAMMABLE WITH INDEPENDENT ZONES (NUMBER OF ZONES DEPENDS FOR MODEL) THROUGH OUR TOUCH SCREEN.
- INDEPENDENT ZONES TEMP CONTROL (PID) THROUGH SSR RELAYS FOR COMPLETE AND ACCURATE CONTROL.
- CONVEYOR SPEED ADJUSTABLE FROM 2 CM/MIN TO 200 CM/MIN (OTHER RANGES POSSIBLE)
- CONVEYOR MODE CONTINUOUS SMDA (ADJUSTABLE SPEED FROM 0.002 TO 2 M/MIN)



- ALL OUR OVENS ARE EQUIPPED WITH SPECIALLY DESIGNED IR (620 X 620 MM) PANEL TO WORK WITH SPECIFIC WAVELENGTH FOR ORGANICS MATERIALS TO ACHIEVE BETTER HEATING SPEEDS AND EFFICIENCY.
- MOTORIZED OPENING OF HOODS FOR GREATER SIMPLICITY



MODELO CF40 HIR



SOFTWARE DRYcontrol IR 8



CF80 HIR VIDEO [https://youtu.be/706jw\\_F0Yfk](https://youtu.be/706jw_F0Yfk)



[FULL CATALOG DOWNLOAD](#)

MATERIALS: CONFORMAL COATINGS, ACRYLICS, URETHANES, SILICONES, RTV, BI-COMPONENT MATERIALS, ETC.



# CURING SOLUTIONS

## UV CURING OVENS CFUV SERIES

RELIABLE, ACCURATE AND EASY MAINTENANCE SOLUTIONS

### UV CURING STATIONS FOR CONFORMAL COATINGS AND ADHESIVES

- EFFICIENT UV CURING OVENS FOR ALL TYPES OF UV ADHESIVES, UV VARNISHES, EPOXYS AND UV POLYURETHANES, ETC.
- 6 OR 10 UV LAMPS (CFUV6 OR CFUV10 RESPECTIVELY) TO COVER A WIDE RANGE OF SURFACES AND SHAPES.
- ADJUSTABLE DISTANCE BETWEEN LAMPS (MANUAL BALL SCREW, AUTOMATIC OPTIONAL) AND SUBSTRATE TO USE THE MAXIMUM LEVEL OF ABSORPTION OF ENERGY.
- AUTOMATIC ENTRY AND EXIT DOORS TO AVOID EXTERIOR INTERACTIONS.
- AVAILABLE LAMPS:

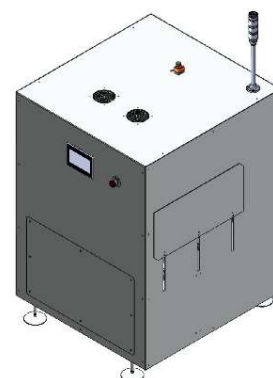
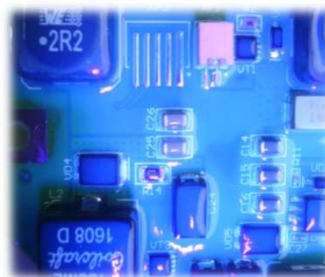
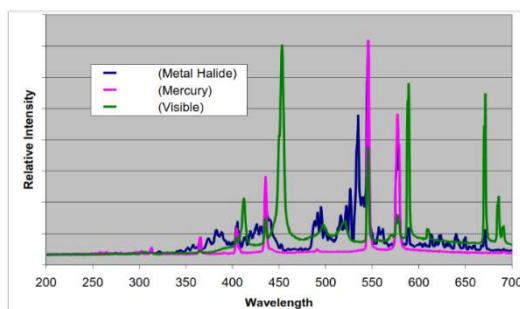
ENERGY 105 – 150 mW / CM<sup>2</sup>. CURING AREA 250X250MM.  
ENERGETIC DENSITY: 120 W / CM  
(OTHER HOUSING MEASURES AVAILABLE)



INLINE OVEN CFUV6



BENCHTOP OVEN CFUV2

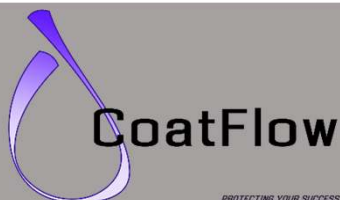


VIDEO APPS UV CFUV6 <https://youtu.be/2bMEplm-yz4>



[FULL CATALOG DOWNLOAD](#)

MATERIALS: CONFORMAL COATINGS, ACRYLICS, URETHANES, SILICONES, RTV, BI-COMPONENT MATERIALS, ETC.



PROTECTING YOUR SUCCESS



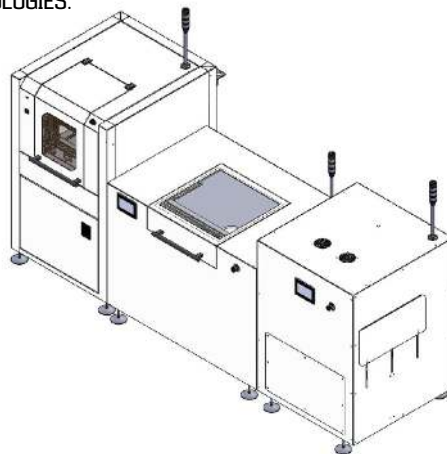
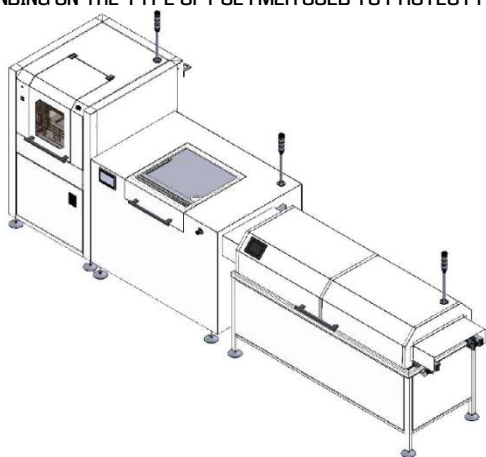
[www.coatflow.com](http://www.coatflow.com)

# SELECTIVE CONFORMAL COATING AND CURING SOLUTIONS

## COMPLETE LINES

### FULL PROTECTION SOLUTIONS

- FOR A COMPLETE LEVEL OF AUTOMATION AND A TOTAL CONTROL OF ALL THE PARAMETERS RELATED TO THE PROCESS OF PROTECTION OF PCB'S, WE HAVE COMPLETE SOLUTIONS, WHICH WILL RAISE THE LEVEL OF AUTOMATION TO EXTREMES IN WHICH THE HUMAN FACTOR BECOMES A MERE ANECDOTE.
- DEPENDING ON THE TYPE OF POLYMER USED TO PROTECT PCB'S WE HAVE SEVERAL TECHNOLOGIES.



- **CONFORMAL COATING MACHINE IN LINE, INSPECTION STATION / FLUSH OFF AND CURING OVEN BY IR TECHNOLOGY.**
- IDEAL FOR ACRYLIC, POLYURETHANES AND SILICONE MATERIALS (WHICH DO NOT REQUIRE SPECIFIC HUMIDITY CONTROL). THE FLUSH-OFF STATION WILL ALLOW US TO EVAPORATE SOLVENTS AND ALLOW BUBBLES TO COME OUT THAT IN ANOTHER CASE THEY WOULD BE CAUGHT IN THE CURING PROCESS.

- **CONFORMAL COATING MACHINE IN LINE, INSPECTION STATION / FLUSH OFF AND CURING OVEN BY UV TECHNOLOGY.**
- IDEAL FOR ACRYLIC MATERIALS, POLYURETHANES, EPOXIS AND UV CURING SILICONES. THE INSPECTION STATION WILL ALLOW US TO REVISE VISUALLY WITH THE BUILT-IN BLACK LIGHT IF THE PROCESS HAS BEEN SATISFACTORY.



MATERIALS: CONFORMAL COATINGS, ACRYLICS, URETHANES, SILICONES, RTV, BI-COMPONENT MATERIALS, ETC.



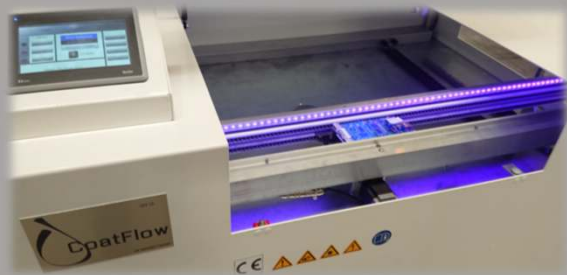


# INSPECTION AND HANDLING SOLUTIONS

## INSPECTION/FLUSH OFF CONVEYOR



INSPECTION / FLUSH OFF STATION



LOADING CONVEYOR CFC15

### RELIABLE, ACCURATE AND EASY-MAINTENANCE SOLUTIONS FOR COATING AND DISPENSING

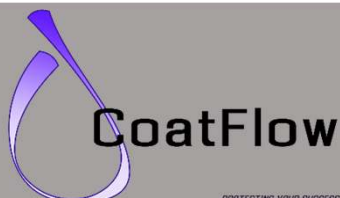
- INSPECTION STATION SPECIALLY DESIGNED FOR PCB'S INSPECTION AFTER COATING PROCESS.
- BLACK AND WHITE LIGHT FOR AUTOMATIC INSPECTION. AUTOMATIC SWITCHING.
- SECURITY GLASS IN COVER.
- TWO WAYS OF WORK: INSPECTION AND FLUSH OFF (EVAPORATION OF SOLVENTS AND BUBBLES REDUCTION BEFORE THE IR OVEN)
- **INSPECTION MODE:** AUTOMATICALLY STOP EACH PLATE IN THE CENTRAL AREA FOR INSPECTION WITH BLACK LIGHT. WHEN THIS IS CORRECT. OPERATOR CAN PRESS BUTTON AND CONTINUE TO THE OVEN.
- **FLUSH OFF MODE** OR EVAPORATION: WE WILL CREATE A BUFFER WHERE THE PCB'S WILL ENTER AFTER THE COATING MACHINE. THE DISTANCE BETWEEN PCB'S AND THE DISPLACEMENT SPEED ARE CONFIGURABLE BY SCREEN
- ROBUST CONSTRUCTION TO AVOID UNWANTED MOVEMENTS AND VIBRATIONS.
- TOUCH SCREEN ALLOWS TO CONTROL THE WORK MODES AND SEE THE STATUS IN REAL TIME OF THE ENTIRE SYSTEM. ALL CONFIGURATIONS ARE PERFORMED BY SOFTWARE.
- TOTALLY SMEMA COMPATIBLE.
- MOTOR TRACTION SYSTEM STEP BY STEPPER MOTORS WITH STEEL CHAIN.
- INTERIOR MADE WITH STAINLESS STEEL AND ALUMINUM FOR EASY CLEANING AND GOOD PROTECTION AGAINST SOLVENTS AND LIQUIDS AGGRESSIVE

FULL LINE WITH INSPECTION: <https://youtu.be/Bh6yiQH64eY>



[DOWNLOAD FLUSH OFF / INSPECTION BROCHURE](#)

MATERIALS: CONFORMAL COATINGS, ACRYLICS, URETHANES, SILICONES, RTV, BI-COMPONENT MATERIALS, ETC.



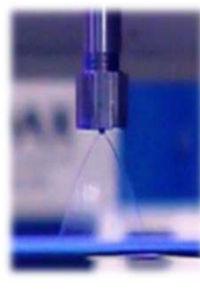
[www.coatflow.com](http://www.coatflow.com)



# SELECTIVE CONFORMAL COATING AND DISPENSING SOLUTIONS

## VALVES PRODUCT RANGE

SPRAY  
MICROSPRAY  
COATING/FILM  
AGUJA  
SPOOL  
MICROSPROUT  
ROTARY  
CAVITY  
JET



*SELECTIVE COATING  
MICRO-SPRAY  
'SPRAYING' AND 'FILM'  
DISPENSING  
BASKETING  
UNDERFILLING  
'POTTING'*

SPOOL

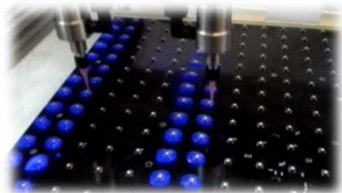
ROTARY

MINI SPOOL

COATING FILM



CAVITY PUMP MICRO



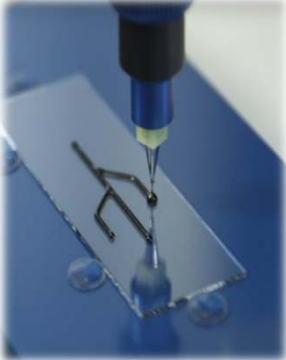
CAVITY PUMP



JET



CAVITY PUMP MICRO VALVES



CAVITY PUMP VAL FOR ABRASIVES

*'LED'S' APPS  
MILITARY  
AUTOMOTIVE  
MEDICAL*



MATERIALS: CONFORMAL COATINGS, ACRYLICS, URETHANES, SILICONES, RTV, BI-COMPONENT MATERIALS, ETC.



[www.coatflow.com](http://www.coatflow.com)

# SELECTIVE CONFORMAL COATING AND DISPENSING SOLUTIONS

## PRECISION SPRAY VALVES



### CFS40RSS / CFS40FSS / CFS25P SPRAY VALVES

Spray valves are designed for precise application of low viscosity spray materials.

The external control of the piston stroke makes it very easy for the operator to fine-tune the material flow, along with the integrated precision micrometer. Full control of the spray cycle is achieved by adjusting the material flow and the precise control of pre-spray, air for atomization and post-spray provided by **Coatflow® dispensing and coating systems**.

Maintenance is simplified by simplifying the internal control parts. Downtime is minimized by simply replacing a gasket / seal during regular maintenance.

The fluid housing of the spray valve is made of stainless steel and the control parts of anodized aluminum. A replaceable Delrin® seat provides a good cut of supply and provides a long service life. The compact design and mounting holes allow easy integration into automated applications.

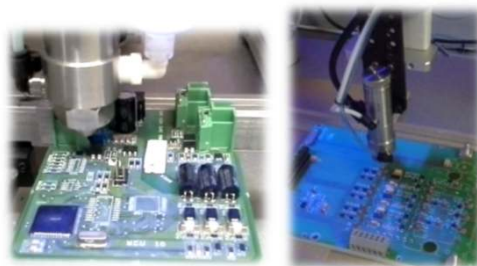
### FEATURES

- Consistent spray coverage
- Interchangeable nozzles and caps
- No overspray
- Positive shut-off
- Adjustable flow control
- Long life cycles

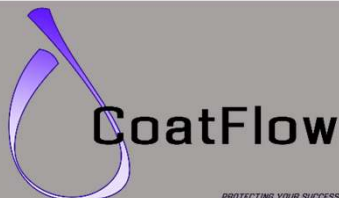
	CFS40RSS	CFS40FSS	CFS25P
<b>Size Ø x H:</b>	1.12" x 4.2" (28mm x 104mm)	1.12" x 4.3" (28mm x 109mm)	1.12" x 3.34" (25mm x 185mm)
<b>Weight:</b>	0.73 LB (331g)	0.73 LB (331g)	0.68lb (310g)
<b>Fluid Inlet:</b>	1/8" NPT	1/8" NPT	1/8" NPT
<b>Fluid Outlet:</b>	TOBERA CÓNICA	TOBERA PLANA	Tobera Redonda
<b>Mounting:</b>	1/4-20UNC-2B	1/4-20UNC-2B	1/4-20UNC-2B
<b>Maximum Fluid Pressure:</b>	100 PSI (6.9 BAR)	100 PSI (6.9 BAR)	145psi (10bar)
<b>Minimum Fluid Pressure:</b>	70 PSI (4.8 BAR)	70 PSI (4.8 BAR)	100psi (6.9bar)
<b>Wetted parts:</b>	303 SS, Teflon®, Delrin®	303 SS, Teflon®, Delrin®	SS, Teflon®, Delrin®
<b>Cycle Rate:</b>	MÁS DE 400 CICLOS/MIN	MÁS DE 400 CICLOS/MIN	Menos de 600 ciclos/min
<b>Material Viscosity Range:</b>	1 – 5000 cps	1 – 5000 cps	1 – 500.000cps



[SPRAY PRECISION VALVES CATALOG DOWNLOAD](#)



MATERIALS: CONFORMAL COATINGS, ACRYLICS, URETHANES, SILICONES, RTV, BI-COMPONENT MATERIALS, ETC.



[www.coatflow.com](http://www.coatflow.com)

# SELECTIVE CONFORMAL COATING AND DISPENSING SOLUTIONS

## PRECISION MICRO SPRAY VALVES



CFN20



CFN20SS



CFN25P

<b>Size Ø x H:</b>	1.12" x 4.6" (28mm x 117mm)	1.12" x 4.6" (28mm x 117mm)	0.98" x 6.45" (25mm x 164mm)
<b>Weight:</b>	0.3lb (136g)	0.5 lb (227g)	0.46 lb (210g)
<b>Fluid Inlet:</b>	1/8" NPT	1/8" NPT	1/8" NPT
<b>Fluid Outlet:</b>	Luer lock Macho	Luer lock Macho	Luer lock Macho
<b>Mounting:</b>	1/4- 20UNC-2B	1/4-20UNC-2B	1/4-20UNC-2B
<b>Maximum Fluid Pressure:</b>	300psi (20.7bares)	300psi (20.7bares)	145psi (10bar)
<b>Minimum Fluid Pressure:</b>	70psi (4.8bares)	70psi (4.8bares)	100psi (6.9bar)
<b>Wetted parts:</b>	303 SS, AL Anodizado, Teflon®, EPR	303 SS, Teflon®, EPR	SS, Teflon®, Delrin®
<b>Cycle Rate:</b>	Más de 400 ciclos/min	Más de 400 ciclos/min	Menos de 400 ciclos/min
<b>Material Viscosity Range:</b>	1 – 100,000 cps	1 – 100,000 cps	1 – 500,000 cps

### CFN20 / CFN20SS / CFN25P NEEDLE VALVES

Needle valves dispense a very precise amount of material with a wide range of shots and drop sizes due to minimal dead / fixed flow.

The external control of the piston stroke makes it very easy for the operator to fine-tune the material flow.

Very easy maintenance with little or no downtime. The compact design and mounting holes allow easy integration into automated applications.

The CFN25P double-acting adjustable needle valve is pneumatically actuated, and can also work as a single-acting since they have a high-recovery spring installed.

### FEATURES

Precise and consistent dispensing

Angled cannula needles can be easily oriented in the desired direction thanks to the rotating valve head

Designed to minimize maintenance needs due to its design of control and wet parts which are separated

[NEEDLE PRECISION VALVES CATALOG DOWNLOAD](#)



MATERIALS: CONFORMAL COATINGS, ACRYLICS, URETHANES, SILICONES, RTV, BI-COMPONENT MATERIALS, ETC.



[www.coatflow.com](http://www.coatflow.com)

# SELECTIVE CONFORMAL COATING AND DISPENSING SOLUTIONS

## PRECISION COATING VALVES



### COATING VALVE CFCV10 FILM

Coating valves are designed for precise application of low viscosity materials. These valves are designed for applications in which the application speed of the conformal coating is a fundamental parameter. The external control of the stroke of the piston makes it very easy for the operator to precisely adjust the flow of material. Total control of the coating cycle is achieved by adjusting the material flow and precise control in the pre-dispensing and coating provided by the **Coatflow** dispensing and coating systems. Maintenance is simplified by eliminating the annoying springs that trap around the needle. Downtime is minimized by simply replacing a seal / seal during routine maintenance. The compact design and mounting holes allow for easy integration into automated applications.

### FEATURES

- Jetless technology with better edge definition
- Different coating nozzles for variable flow rates
- Uniform coverage with curtain
- Application of thicknesses at high speeds
- Avoid the appearance of bubbles
- Avoid excessive application of materials
- Correct closing of material flow (does not drip)
- Adjustable material flow control with micrometer
- Long useful life

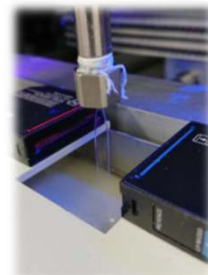


### CFCV10 FILM

<b>Size W x L x H:</b>	19mm x 174mm
<b>Weight:</b>	170g
<b>Fluid Inlet:</b>	1/8" NPT
<b>Mounting:</b>	FLAT NOZZLE
<b>Maximum Fluid Pressure:</b>	3000 psi ( 205 Bar)
<b>Wetted part:</b>	Stainless steel, teflon, kalrez,
<b>Cycle Rate:</b>	Exceeds 400 cycles/minute
<b>Material Viscosity Range:</b>	1 - 100cps

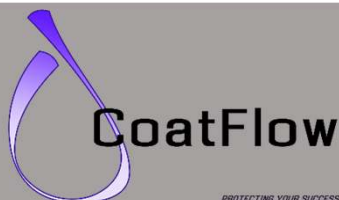


[COATING PRECISION VALVES CATALOG DOWNLOAD](#)



COATING VALVE IN WIDTH SENSOR

MATERIALS: CONFORMAL COATINGS, ACRYLICS, URETHANES, SILICONES, RTV, BI-COMPONENT MATERIALS, ETC.



PROTECTING YOUR SUCCESS



[www.coatflow.com](http://www.coatflow.com)



# SELECTIVE CONFORMAL COATING AND DISPENSING SOLUTIONS

## CONTROL SOFTWARE COATCONTROLPRO 2

### CONTROL SOFTWARE COATcontrolPRO 2

EXCLUSIVE SOFTWARE THAT ALLOWS US TO CONTROL ALL PARAMETERS AND EXTRAS SUCH AS CONVEYOR, STOPPERS, DOORS, EMERGENCIES, TANK AND T CARTRIDGE LEVEL ALARMS, PRODUCTION CONTROL, ETC.

WITH THIS SOFTWARE WE ALSO CONTROL THE QUANTITY OF MATERIAL DISPENSED PER BOARD AND YOU CAN SAVE THE VALUES IN CASE TRACEABILITY MODULE IS INSTALLED (IF FLOW METERS OPTION IS INSTALLED).

REAL-TIME VIEW OF WHICH VALVE IS WORKING, COMMUNICATION STATUS WITH UPPER AND LOWER MACHINES (MOD INLINE).  
REAL-TIME CONTROL OF SPRAY PRESSURE.



Main tab of COATcontrolPRO 2 SOFTWARE

### REAL-TIME VIEW ON THE MAIN SCREEN :

- NUMBER OF DAY AND TOTAL CYCLES
- TOTAL CYCLE, TOTAL DISPENSING TIME AND DISPENSING VALVE PER VALVE
- MISCELLANEOUS ALARMS STATUS
- SERVO MOTORS AND DRIVERS STATUS
- CONVEYOR STATUS (MOD INLINE)
- STOPPERS STATUS, REGISTERING PINS AND CELLS (MOD INLINE)
- LEVELS OF TANKS, CARTRIDGES AND SYRINGES
- STATUS OF INSTALLED VALVES
- LOW PRESSURE AND SPRAY VALVE ALARM.
- **FLOW METER** STATUS, REAL TIME QUANTITY, LAST BOARD VALUE AND TOTAL
- SMEMA STATUS (MOD INLINE)
- BLACK/WHITE LIGHT STATUS SWITCH
- DOOR / DRAWER STATUS
- VALVES STATUS
- PROGRAMMING / VISION CAMERAS (OPTIONAL)
- FIDUCIAL PROCESS (OPTIONAL)
- 10 / 20 BARCODE VALUES (OPTIONAL)



VISION PROGRAMMING MODULE



TRACEABILITY MODULE



MATERIALS: CONFORMAL COATINGS, ACRYLICS, URETHANES, SILICONES, RTV, BI-COMPONENT MATERIALS, ETC.



www.coatflow.com

# SELECTIVE CONFORMAL COATING AND DISPENSING SOLUTIONS

## OFF-LINE PROGRAMMING SOFTWARE PATHCOAT®



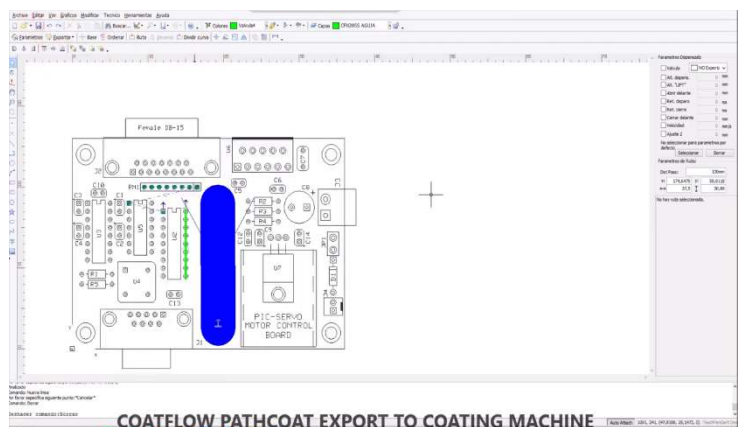
OFF-LINE PROGRAMMING SOFTWARE, WHICH ALLOWS US TO PROGRAM QUICKLY, EASILY AND ACCURATELY OF OUR PROGRAMS FOR SELECTIVE VARNISHING, DISPENSING, "UNDERFILLING", ENCAPSULATING, ETC.

**PATHCOAT®** ALLOWS US TO IMPORT A REAL IMAGE OF THE BOARD OR SUBSTRATE, OR TO IMPORT INFORMATION FROM GERBER FILES (FOR EXAMPLE FOR SOLDER PASTE OR ADHESIVE DISPENSING).

ONCE THE PROGRAM IS MADE, WE EXPORT IT TO A USB DEVICE AND IMPORT IT FROM OUR "TEACHPENDANT" FOR PROGRAMMING OUR COATFLOW EQUIPMENT.

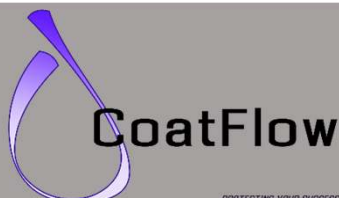
THE PATHCOAT® SOFTWARE ALLOWS US TO PERFORM, AMONG OTHERS:

- POINTS (DROPS)
- LINES IN 2 AND 3D. POLYLINES
- ARCHES AND CIRCLES
- MORE COMPLEX VERTEX FIGURES IN 3D.
- PERFORM QUICKLY: MIRROR, ARRAY, OFFSET, VALVE CHANGES, ETC.
- SELECTION OF UP TO 18 VALVES.
- PRECISE CONTROL OF THE PARAMETERS OF EACH VALVE
- ROUTE OPTIMIZATION AND CALCULATION OF TIMES



[DOWNLOAD PATHCOAT CATALOG SOFTWARE](#)

MATERIALS: CONFORMAL COATINGS, ACRYLICS, URETHANES, SILICONES, RTV, BI-COMPONENT MATERIALS, ETC.



[www.coatflow.com](http://www.coatflow.com)

# SELECTIVE CONFORMAL COATING AND DISPENSING SOLUTIONS

## PROGRAMMING VISION SOFTWARE COATVISIONTEACH (INTEGRATED IN COATCONTROLPRO 2.0)

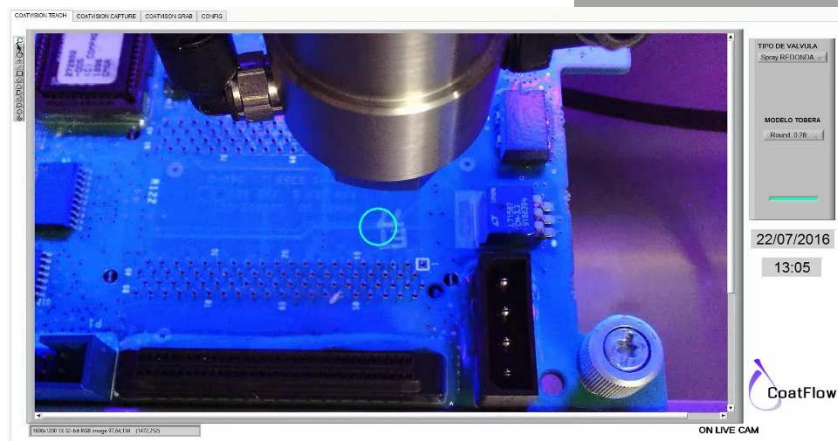


### PRECISE, ROBUST, REPETITIVE AND EASY TO MAINTENANCE SOLUTIONS

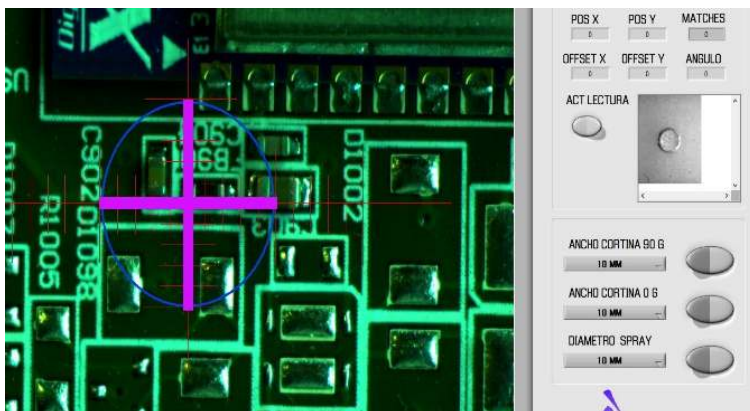
- SYSTEM OF PROGRAMMING BY HIGH RESOLUTION CAMERA.
- SOFTWARE INTEGRATED IN OUR SELECTIVE COATING EQUIPMENT AND DISPENSING FOR EASY PROGRAMMING OF ROUTES, LINES, POINTS, AREAS, ETC.
- THE SYSTEM INCLUDES HIGH RESOLUTION CAMERA AND HIGH ACCURACY IN MOVEMENT CATCHES.
- IT ALLOWS US TO SELECT, FROM THE SET OF VALVES INSTALLED, AND TO SEE OF PRECISELY WAY THE GEOMETRIC FIGURE OF THE FOOTPRINT OF THE APPLIED MATERIAL.
- HIGH RESOLUTION CHAMBER, ESPECIALLY DESIGNED TO SUPPORT SOLVENTS.



MODELS COMPATIBILITY



MAIN WINDOW WITH INSTALLED VALVE SELECTION. AUTOMATIC CHANGE OF FOOTPRINT AND SIZE IN COATVISIONTEACH VERSION.



MAIN WINDOW WITH INSTALLED VALVE SELECTION. AUTOMATIC CHANGE OF FOOTPRINT AND SIZE IN COATCONTROLPRO 2 VERSION.

[CATALOG DOWNLOAD](#)  
[COATVISIONTEACH](#)



MATERIALS: CONFORMAL COATINGS, ACRYLICS, URETHANES, SILICONES, RTV, BI-COMPONENT MATERIALS, ETC.



[www.coatflow.com](http://www.coatflow.com)



# SELECTIVE CONFORMAL COATING AND DISPENSING SOLUTIONS

## PRODUCT RANGE



CF395 IL



CF440 LC



CF440



VÁLVES



CFUV6



CF395IL

CFF 15

CF20 HIR

